

Health Analysts' Special Interest Group

Local health and wellbeing indicators for the island of Ireland

Dundalk Institute of Technology

8 May 2009

Lorraine Fahy

Research Analyst



www.inispho.org
www.publichealth.ie

Overview

- Why we need a broad range of information to measure local health
- INIsPHO work on the development of local health data
- How data can be used
- Benefits and drawbacks
- Moving forward



www.inispho.org
www.publichealth.ie

Institute of Public Health in Ireland (IPH)

- All-Ireland body
- North-South cooperation on public health
- Focus on reducing inequalities in health
- Three main strands to our work:
 - Capacity building
 - Policy support
 - Information and intelligence (INIsPHO)



www.inispho.org
www.publichealth.ie

Why we need a broad range of
information to measure local health



www.inispho.org
www.publichealth.ie

Factors affecting health & wellbeing

- Complex array of political, social, economic and environmental factors - and health and social services issues - that affect the health of a population
- Current health status as well as the future health status of an area



www.inispho.org
www.publichealth.ie

National data and local data

- Wide range of data available at national level on the broad determinants of health
- National figures can mask important differences at regional and local level
- Comprehensive data at local level on the broad determinants of health is needed to identify and address inequalities

Uses of local health indicators

- Guiding local and national action:
 - Putting the local situation into a broader context
 - Providing a national view of what's going on at the local level

- Awareness raising – keeping health inequalities, their determinants and the needs of vulnerable populations on the agenda

- Specific applications facilitated by regional comparisons:
 - Local needs assessment & health impact assessment
 - Planning and delivery of health and social services
 - National co-ordination of local efforts
 - Monitoring broad progress on tackling health inequalities

INIsPHO development of local health indicators

- No system for monitoring local health across the whole island
- Adapted existing datasets to the whole island

English Health Poverty Index (eHPI)

www.hpi.org

➔ Irish Health Poverty Index (iHPI)

Northern Ireland Health Inequalities Monitoring System

www.dhsspsni.gov.uk/index/stats_research/stats-equality.htm

➔ All-Ireland Health and Social Care Indicator Set (AIHSC)



www.inispho.org
www.publichealth.ie

INIsPHO development of local health indicators

Irish Health Poverty Index (iHPI)

+

All-Ireland Health and Social Care Indicator Set (AIHSC)

+

Additional demographic indicators



All-Ireland Health and Wellbeing dataset (AIHWDS)

AIHWDS – Collation of data

Collated data on 87 measures for 52 local regions across the island

Local level:

- 26 Local Government Districts in the North
- 26 (traditional) counties in the South

How comparable are measures from two different jurisdictions?

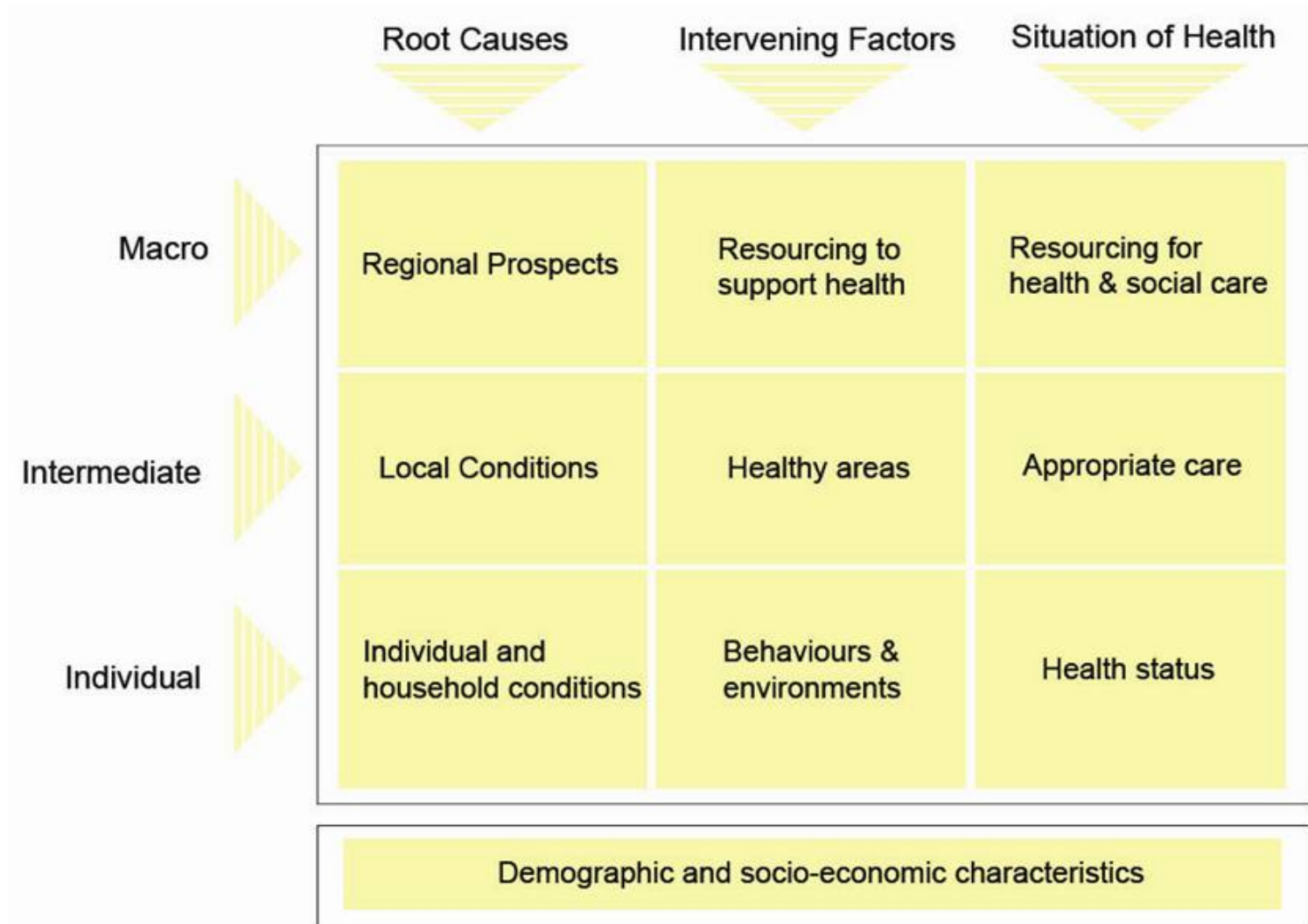
Four categories of measures:

- All-Ireland
- North and South
- North only
- South only



www.inispho.org
www.publichealth.ie

AIHWDS conceptual framework



A flavour of the information collected

- Health data: hospital admissions, psychological and physical morbidity, life expectancy, PYLL
- Lifestyle data: physical activity, smoking, fruit & veg consumption, alcohol abuse
- Environmental data (social and physical): social networks, housing quality, living alone, crime rates
- Economic data: GDP, house prices, change in job supply
- Educational data: pupil to teacher ratio, attainment, resourcing

Web-based visualisation tool

Tables, maps, spider plots and other charts

An exploratory tool to look at:

- Relationship between measures (at an area level)
- Geographical variation in a single measure across the island
- Profiles of a single area based on multiple-measures
- Geographical comparisons based on multiple measures
- Changes over time (when updated)



www.inispho.org
www.publichealth.ie

Accessing AIHWDS

www.inispho.org/aihwds



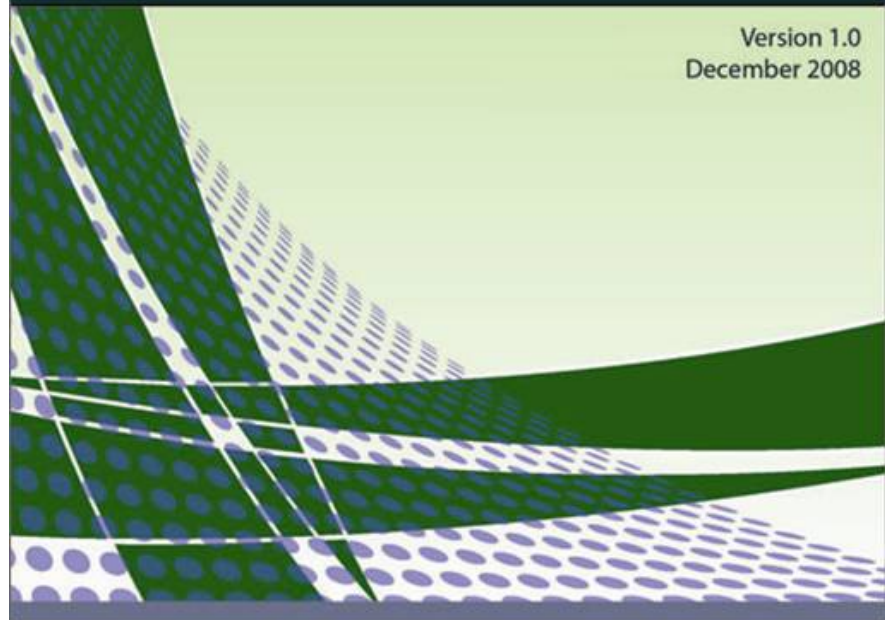
www.inispho.org
www.publichealth.ie



Working Document

All-Ireland Health and Wellbeing Data Set
INIsPHO Data Briefing No 2008: 3

Version 1.0
December 2008



How data can be used



www.inispho.org
www.publichealth.ie

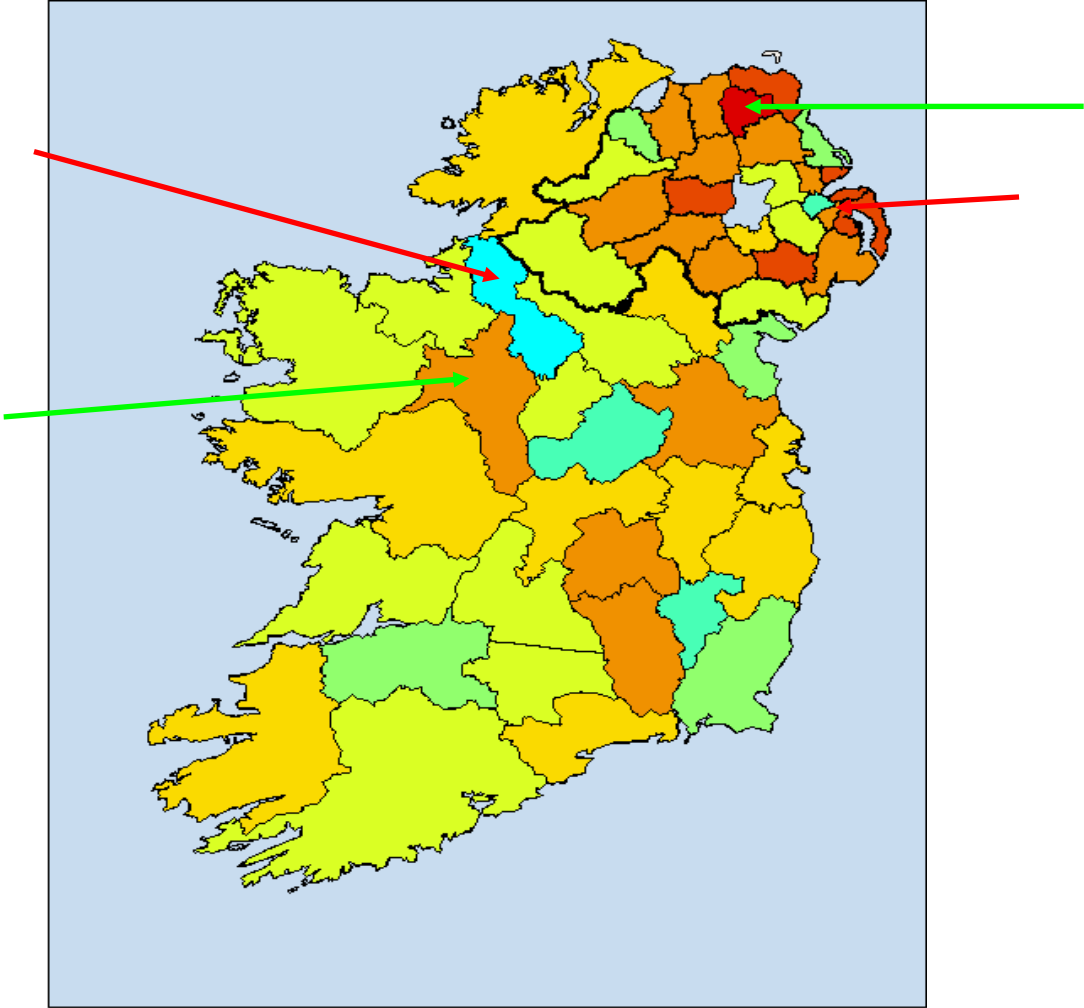
Life expectancy

Republic of Ireland vs Northern Ireland, 2002-2004

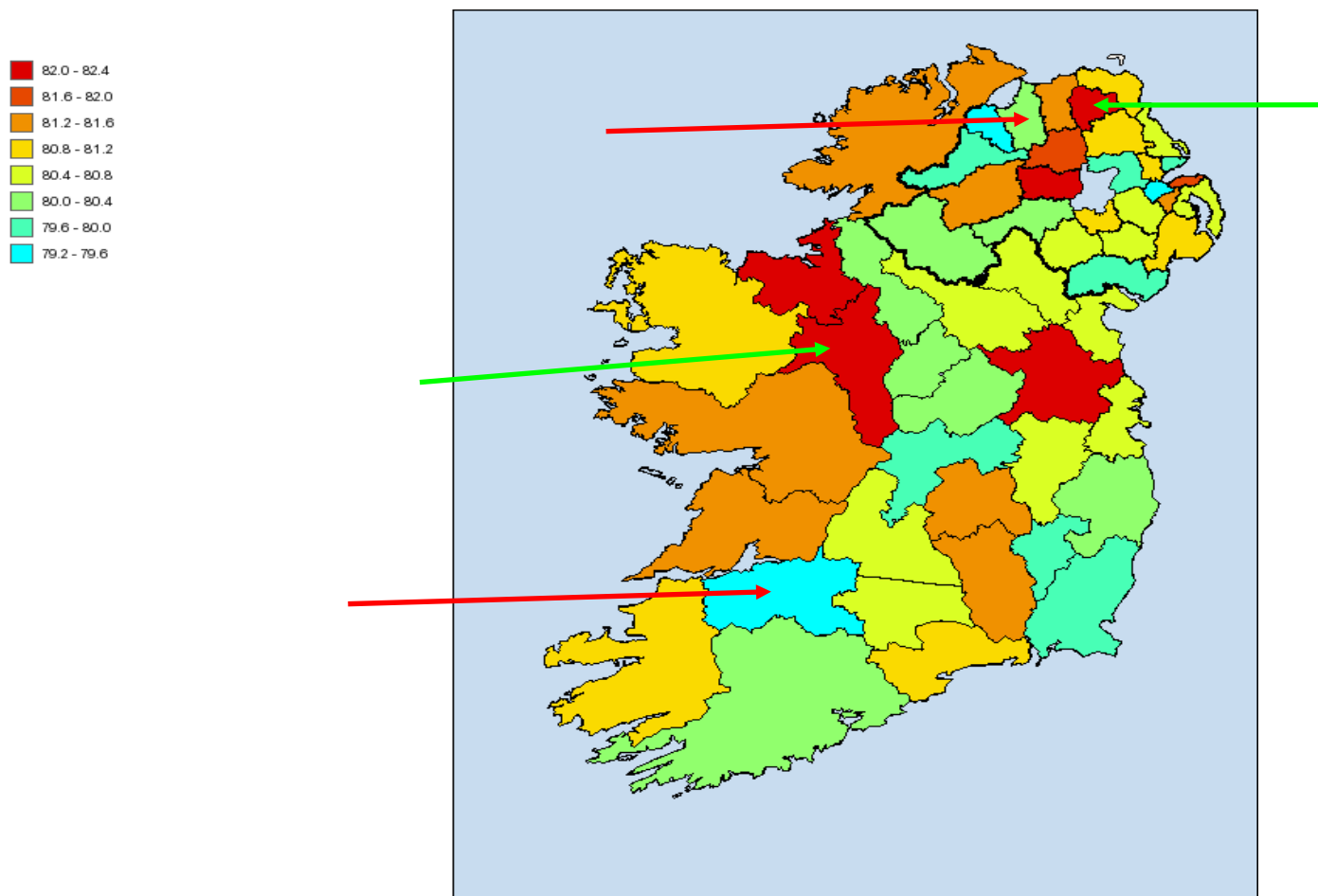
	Republic of Ireland	Northern Ireland
Highest male life expectancy	76.9 years (Roscommon)	78.1 years (Ballymoney)
Lowest male life expectancy	72.8 years (Leitrim)	73.5 years (Belfast)
Highest female life expectancy	82.2 years (Roscommon)	82.4 years (Ballymoney)
Lowest female life expectancy	79.3 years (Limerick)	79.3 years (Derry)

Male life expectancy by county and LGD, 2002 - 2004

- 78.0 - 78.8
- 77.2 - 78.0
- 76.4 - 77.2
- 75.6 - 76.4
- 74.8 - 75.6
- 74.0 - 74.8
- 73.2 - 74.0
- 72.4 - 73.2

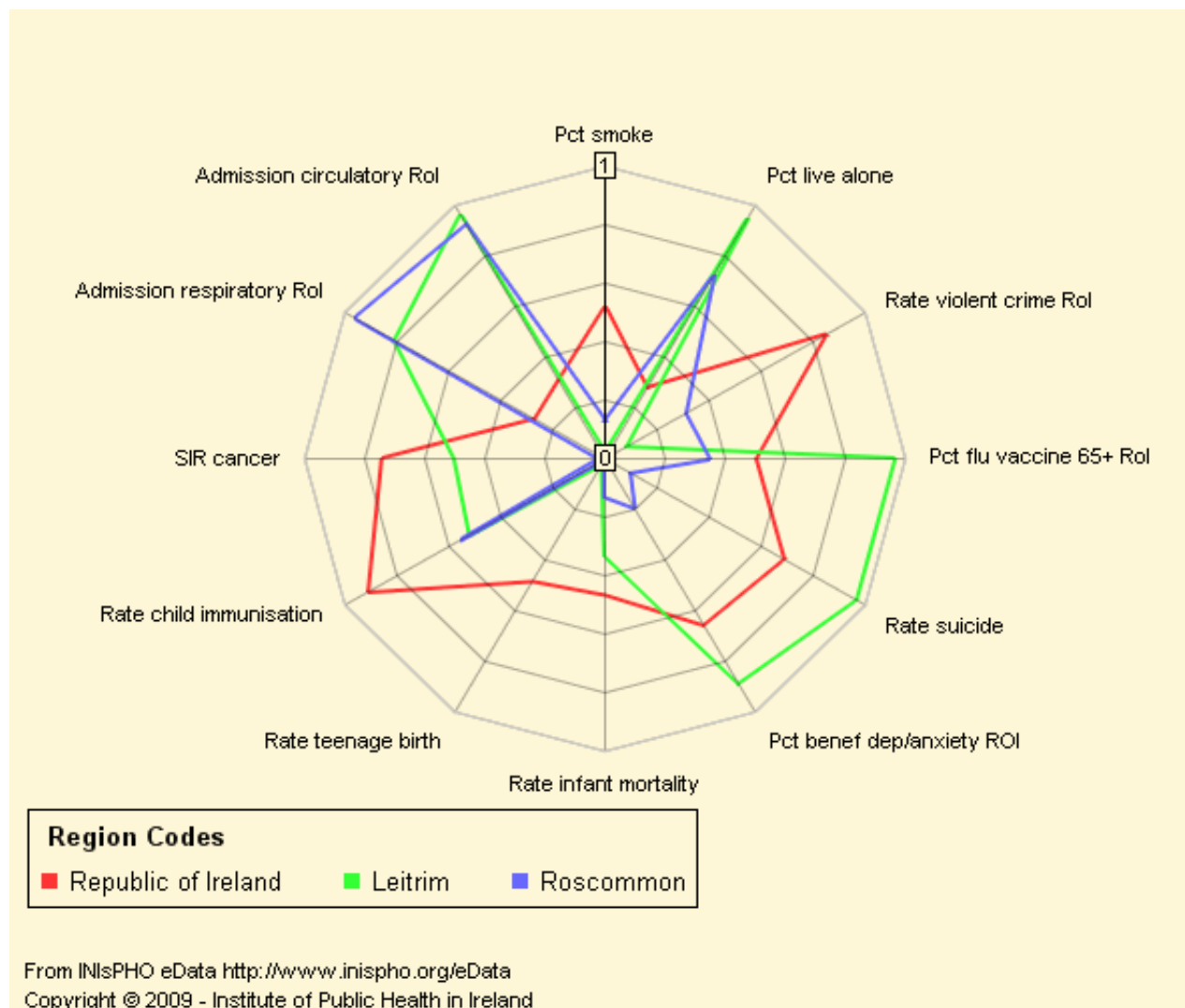


Female life expectancy by county and LGD, 2002 - 2004



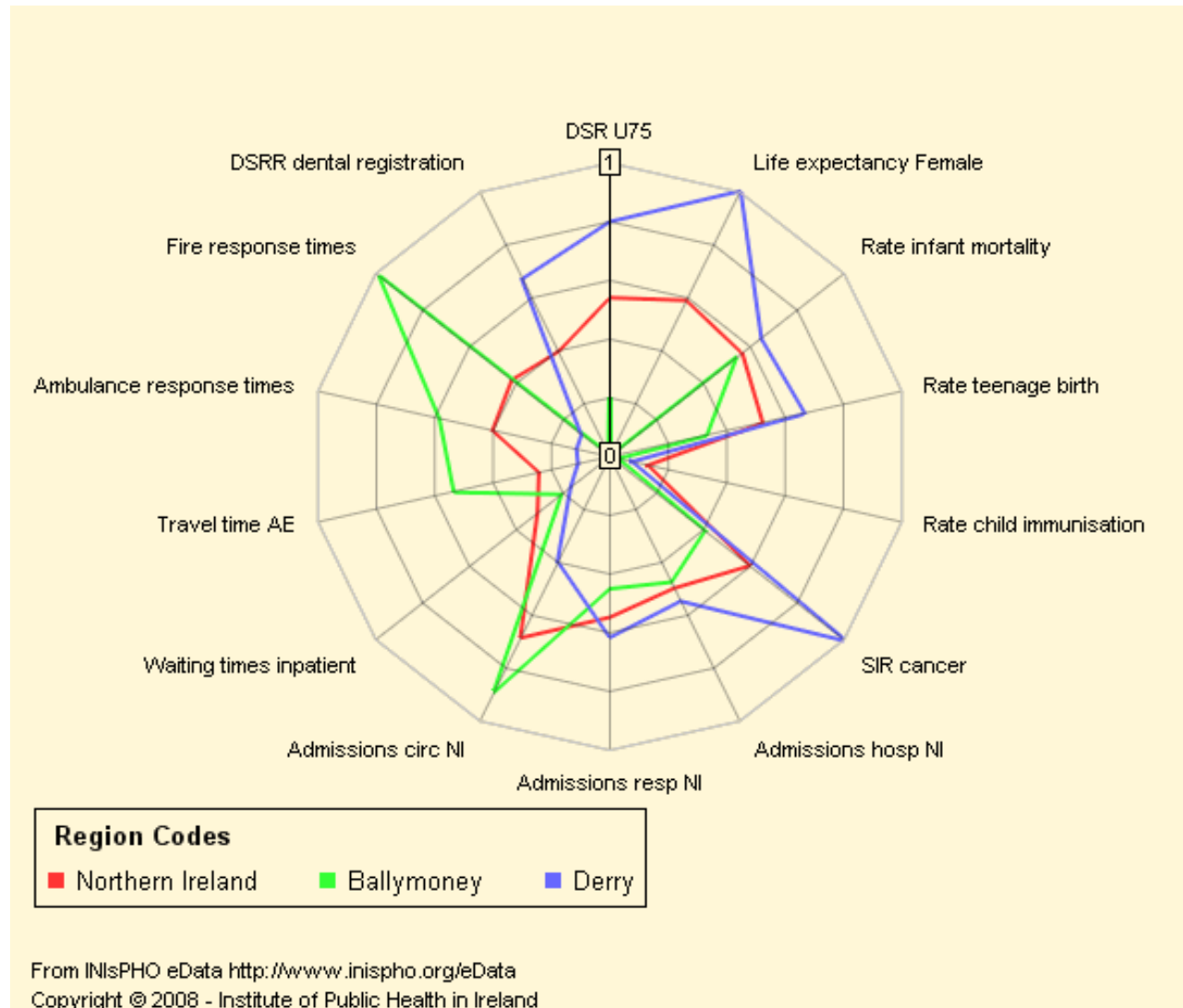
Republic of Ireland:

Comparison of county with highest male life expectancy (Roscommon) with county with lowest male life expectancy (Leitrim)



Northern Ireland:

Comparison of LGD with highest female life expectancy (Ballymoney) with LGD with lowest female life expectancy (Derry)



Benefits and drawbacks



www.inispho.org
www.publichealth.ie

Benefits

- First All-Ireland dataset to monitor health across whole island
- Broad range of factors
- Help understand why inequalities exist and how they might be best addressed
- Support a range of planning, delivery and monitoring functions



www.inispho.org
www.publichealth.ie

Drawbacks

- Mask variation
 - Small sample sizes
 - Data not available
- Frequency of update
- Different geography between sectors



Moving forward

- Core set of agreed local health and wellbeing indicators across a broad range of factors
- Collated and regularly updated across the island
- A basis of local health and wellbeing profiles
- Help support learning and sharing of best practice from one area to another
- Incorporate European comparisons
- Ultimately deliver support for better health and reduced health inequalities – not just information!

END



www.inispho.org
www.publichealth.ie